



2009 Review

Visits and talks

This year we had another interesting and varied range of talks and visits— thank you Celia.

Phil Holmes spoke to us about the best kept secret (Eakring Oil Fields) of World War 2. This was followed up in June by a visit to the Oil Fields Museum at Eakring. I understand from members that this was a fascinating and worthwhile visit that built upon and complemented Phil's talk.

Our other outing this year was to Colston Bassett with Val Henstock as our guide. We enjoyed fine weather on our walk around the village and local churches. Val as ever was an excellent guide. She pointed out places of interest and brought them to life with details of the contribution people past and present have made to shape Colston Bassett as we see it today. The walk ended at the local pub, where members took the opportunity to socialise and sample the delicious local beers on offer!

Other talks covered a wide range of issues and centuries from Four Medieval Women to Robin Blincoe - Nottingham's Oliver Twist.

Our meetings at the Women's Institute Lowdham continue to be a success with our members and 'visitors' including our friends from the Lowdham Historical Society. It is noticeable how many people now stay after the talk to take refreshments and have a chat. This is a welcome change to how we used to be at the Robin Hood PH, when members

quickly departed the meeting after the talk.

The website continues to be a source of reference for people researching their family history or just wanting to know more about Lambley and its past. We have received enquiries from across the globe with requests for information and the welcome sale of the Lambley books to aid our finances. Any member who would like to get involved in contributing to the website would be most welcome – no IT skills needed!

Looking ahead to 2010:

The committee has been busy putting together another exciting year of talks and visits, including a celebration of 30 years of the LHS with Chris Weir.

The Society has been approached by Media Archive for Central England (MACE) to take part in a project in 2010 to record local film.

Their brief is as follows:

Tucked away in boxes in attics and sheds, cupboards and garages are the filmed records of families and communities which are a uniquely important window into our local and community history.

MACE the regional moving image archive for the East and West Midlands, is seeking 60 partner organisations to look for this valuable material in their own communities as part of a project to find and uncover the hidden filmed heritage of the Midlands.

The project will provide new copies of film for depositors and for the community use in local schools, community archives and local collections. It will ensure the long term preservation of the materials found so that it can go on being used by future generations.

Further information can be found on their Website www.macearchive.org.uk

The MACE team are currently awaiting funding via a grant from the National Lottery for this project. A decision is expected in January 2010.

If any members would like to
continued overleaf





**A damp but enjoyable evening
at the Eakring oilfield**

continued from front page

get involved with this exciting project then please speak to me. We plan to hold an event similar to the very successful Lambley Focus days we have held in the past, but this time focus on movie film. I will announce more details at our meetings in 2010.

If you have any film or know of anyone who has film that we could submit to MACE for archiving, then again please speak to me.

I would like to record my thanks to members for their support in 2009. I look forward to seeing you all at our meetings and events in 2010.

To the committee members, a sincere big thank you! Without your commitment, dedication and hard work the Society would simply not exist. Together, let us make 2010 another successful year for the Society.

John Smith Chairman LHS.

Programme for 2010



25th January
**AGM followed by Captain
GLS Dyer talking about
his experiences as a
Vulcan Bomber Captain.**

15th February
**Anthony Poulton-Smith on "Nottinghamshire
Place Names"**

15th March
**Bromley Kniveton will talk "On turning a
Family Tree into a History".**

19th April
**Tim O'Brien on "Last Post at Newton" - the
life of the Royal Air Force, Newton.**

Saturday 15th May 2.00 pm
**Guided tour of Cromford Village, Derbyshire
by The Arkwright Society**

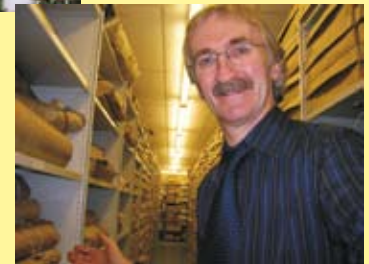


Saturday 5th June 1.00 pm
**Visit to Ellys House, Great
Ponton, Lincs plus Church**



Monday 19th July
7.00 pm
**Guided tour of
Southwell by Val
Henstock, Blue
Badge Guide.**

20th September
**Chris Weir will
celebrate with us
30 years of the
LHS. Details for this
will follow with the
Summer Outings
information.**



18th October
Gareth King on "Myths & Legends"

15th November
**Janice Moulds returns to
let us know about "17th
Century Christmas".**



Please note - unless otherwise stated all meetings will be held at Lowdham WI Hall

**Don't forget to checkout the Lambley Historical Society website
www.lambleyheritage.co.uk**

LAMBLEY HISTORICAL SOCIETY: EARLY DAYS

Chris Weir January 2010

I can hardly believe it! Here we are, all these years on and still the Society pushes forward with innovative projects, supports all kinds of community programmes and meets regularly for its first class programmes of talks and activities. And it's all thanks to a community that loves its village, a Society that is committed to its community and successive committees that have worked their socks off to make things happen! We all owe a huge debt of thanks to those individuals who have organised the projects and activities and delivered the 'goods' to us, the members.

What do I remember of the early days? Well, I certainly remember Professor Alan Rogers of the University of Nottingham (a Regional History specialist) phoning me at the Archives, back in 1979, asking me if I would consider attending a community meeting at Lambley Village Hall about local history. There was the possibility of some kind of local history course in the village. The Reverend Bill Gull chaired the meeting and the hall was packed.

I had never undertaken any kind of class before but, 'still' I thought, why not go along, it's a lovely village and I was fascinated by local landscapes and communities. So, along I went. The evening buzzed with enthusiasm and ideas and I subsequently put together a programme for 20 meetings around the theme of Lambley's history. However those present wanted it all to be under the title of a 'Study Group', so that's what happened! I just followed what the night class wanted to do... the class members made it all work and they made it a pleasure for me. The first year turned into a second year and the second into a third and then we had a book on our hands. We got funds from the University for that first printing and 'The Village Study' was 'born'. And what a success it was. How many times have I heard groups and societies say, on considering a publication..."well, we would like to do something like that Lambley Study!"

But of course that was just the beginning. The contributors to the Study and other individuals in the village didn't want to leave it there and so the Society was formed. The first AGM was held at the house of Mr and Mrs Preston of Plains Farm Close. Mapperley. Arnold on the 29 January 1981 and was followed by a cheese and wine social gathering. Mr Preston was the treasurer in those days and always took delight in his reports when attempting to account for a mysteriously missing halfpence! Only a year later the Society was holding an Open Day called 'Bygone Days' in the Village Hall. It was a huge success and had fabulous displays of kitchen, household and farming bygones. On the committee in those early days were Tony Burroughes, Celia Morris, Alan Morris, Ken Preston, Betty Jones, Connie Fraser, Elizabeth Gull and Eddie Burkes. Of course Celia and Alan are still at the heart of so much in the Society and are owed particular thanks from us all for their commitment to the Society through all the years.

Well all these years on it has been wonderful to see how the Society has continued to flourish and to meet all kinds of new challenges. There have been major achievements in undertaking and achieving the village photographic survey, in using new computer techniques, digital photography, initiating the Newsletter (thanks to Roger), organising and supporting local events and projects ranging from walk trails to archaeology and fully exploiting Lottery money for heritage projects. The commitment of the village to its history was evident in the organising and support for a series of classes recently on manorial history that took place in the church. The list of achievements and activities continues but I have to finish my article. Above all I want to commend all the individuals who began with the Village Study, people like Betty Jones, Emma Simmons, Celia and Alan and many more and those who got the Society going in the early days. Without their enthusiasm and dedication it would never have happened.



Lambley Refocussed Day held in 2006 was a huge success

The lost church of St Ethelburga

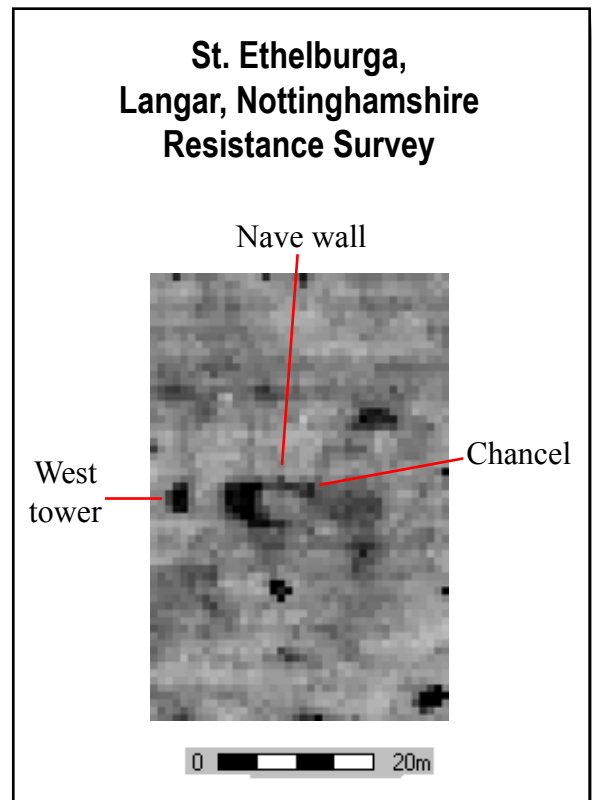
Over the last couple of years Celia and I have been helping a local historian who has been investigating a suspected site of a Saxon/Norman church in the parish of Langar in the Vale of Belvoir. The church was dedicated to St Ethelburga a 7th Century Abbess of Barking Nunnery in Essex and it was located approximately 1.5 km south of Langar village. In Saxon times the church was visited by large numbers of pilgrims and is mentioned in the Vatican archives.

There is no trace of the church today, however there is a field south of the village which has a low mound in it and the plough soil contains large quantities of pottery dating from the Iron Age through to late Medieval and fragments of human bone can also be found. It was therefore decided that the mound warranted further investigation and to this end in 2007 we carried out an earth resistance survey over a 120m x 40m area covering the central portion of the site.

The results of the geophysical survey were very encouraging and we are fairly confident we have found the lost church of St Ethelburga! The picture below shows a rectangular anomaly orientated east-west and is located on the highest point of the mound, its size is typical for a Saxon/Norman church. A good section of the nave wall footings seem to have survived, although the chancel end looks like it has been robbed out. The square high resistance anomaly at the west end could be the base of a small tower or perhaps a porch.

In 2009 we returned to the site to look for evidence of earlier occupation in particular the Romano-British period. We employed a different geophysical technique this time namely magnetometry. The results were very interesting as they showed the area around the church is dominated by groups of rectilinear enclosures which are typical of late Iron Age/Romano-British agricultural settlement i.e. fields and paddocks enclosed by ditches. There is also a hint of a structure, which may be of Roman date, but we will need to do more work before we can be sure

Finally it is well known that many early Christian churches were built on pagan sites, and the results of our work suggest that St Ethelburga follows this tradition and was built on a site which has its origins in prehistory. **Alan Morris**



Treasurer's Report 2009

This is an historic year for the Lambley Historical Society in that it will be 30 years in September since its inauguration. I am happy to be able to report that the accounts remain in credit for 2009.

Membership stands currently at 25 plus two honorary members and, in addition, we have been able to attract a number of visitors who have been interested in specific talks. This brings a welcome addition to our funds. From this, several visitors have indicated that they will be joining the Society in January 2010 which is good news as we are always happy to accept new members.

We are offering new members a free copy of "Living in Lambley" our latest publication (available at a cost of £5 through the Society) thus reducing considerably the cost of the first year's subscription. Included in the subscription are talks of historical interest followed by refreshments and several outings in the Summer, so, if you are interested and would like to become a member, please come along.

We are always open to suggestions as to how we can supplement our income.

Accounts and Treasurer's report will be presented at the AGM.

Jackie Mansfield. Treasurer LHS

Council for British Archaeology – East Midlands Group

The East Midlands Group of the CBA are holding their next meeting at Lowdham Village Hall on Saturday, 27th March 2010. The meeting is to be hosted by Bingham Heritage Trust Association, and some of the talks being given are local in content such as field walking in Bingham, some local flint finds in context and Crow Close, Bingham – is it a Deserted Medieval Village? One of the speakers you will all know is Adrian Henstock.

For further information please either look on the website www.britarch.ac.uk/cbaem or e-mail the Meetings Secretary, Daryl Garton, on daryl@dgarton.plus.com